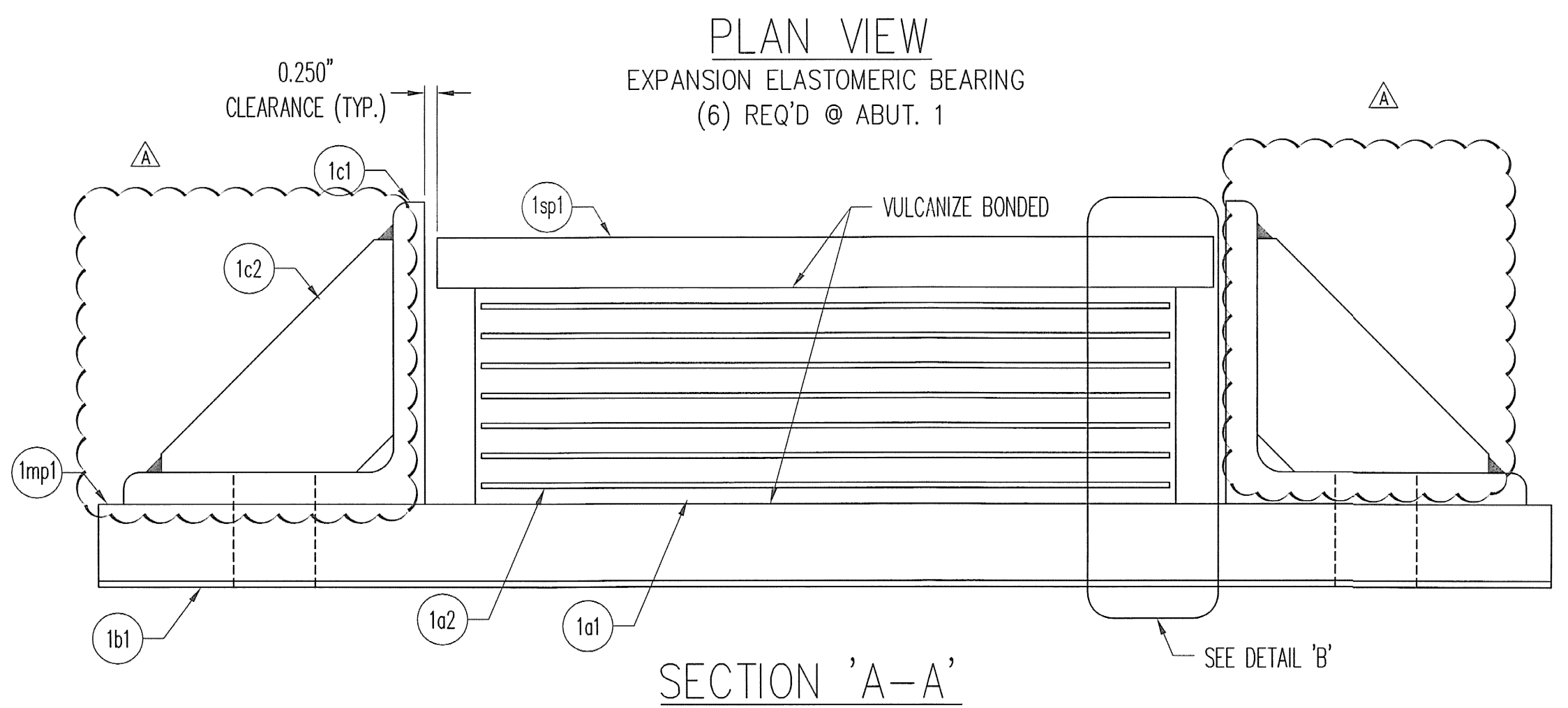
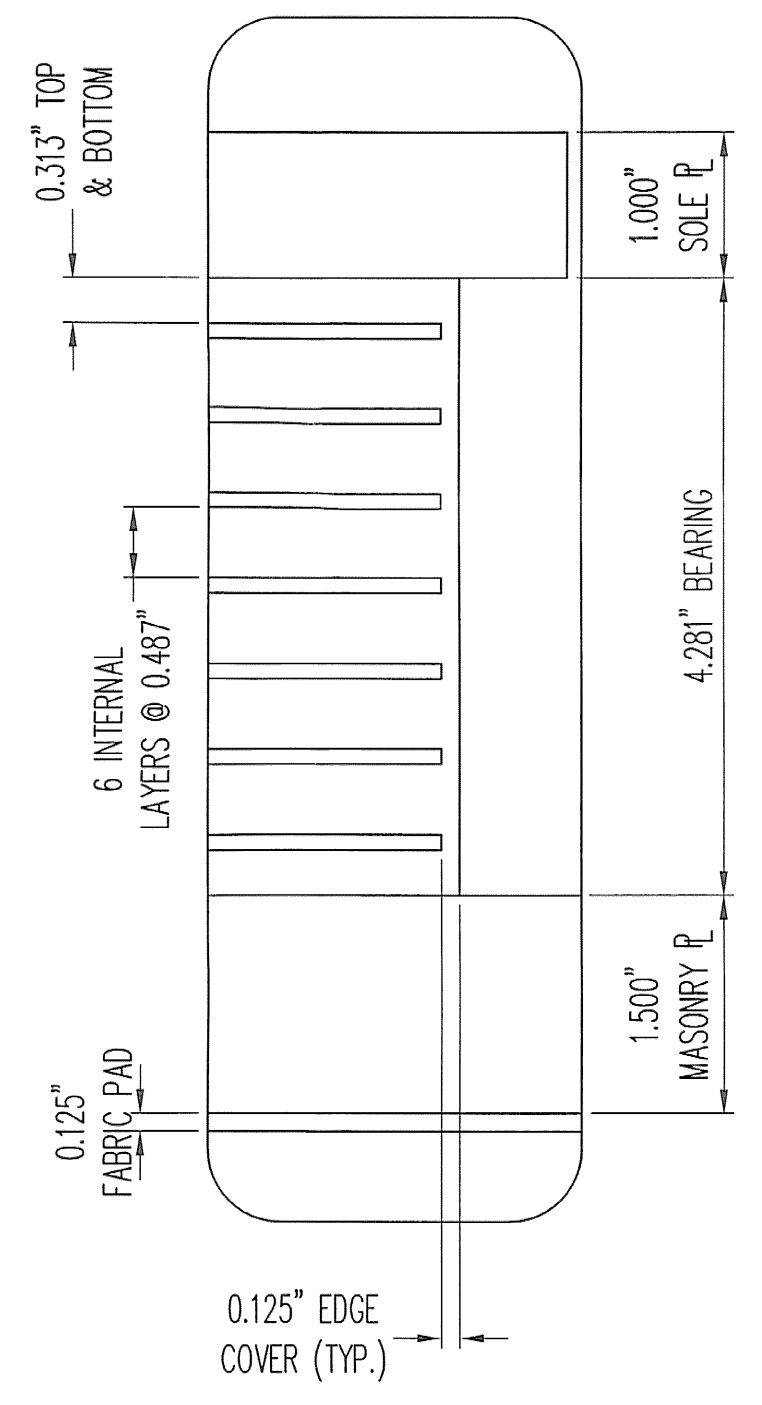


ANCHOR ROD DETAIL

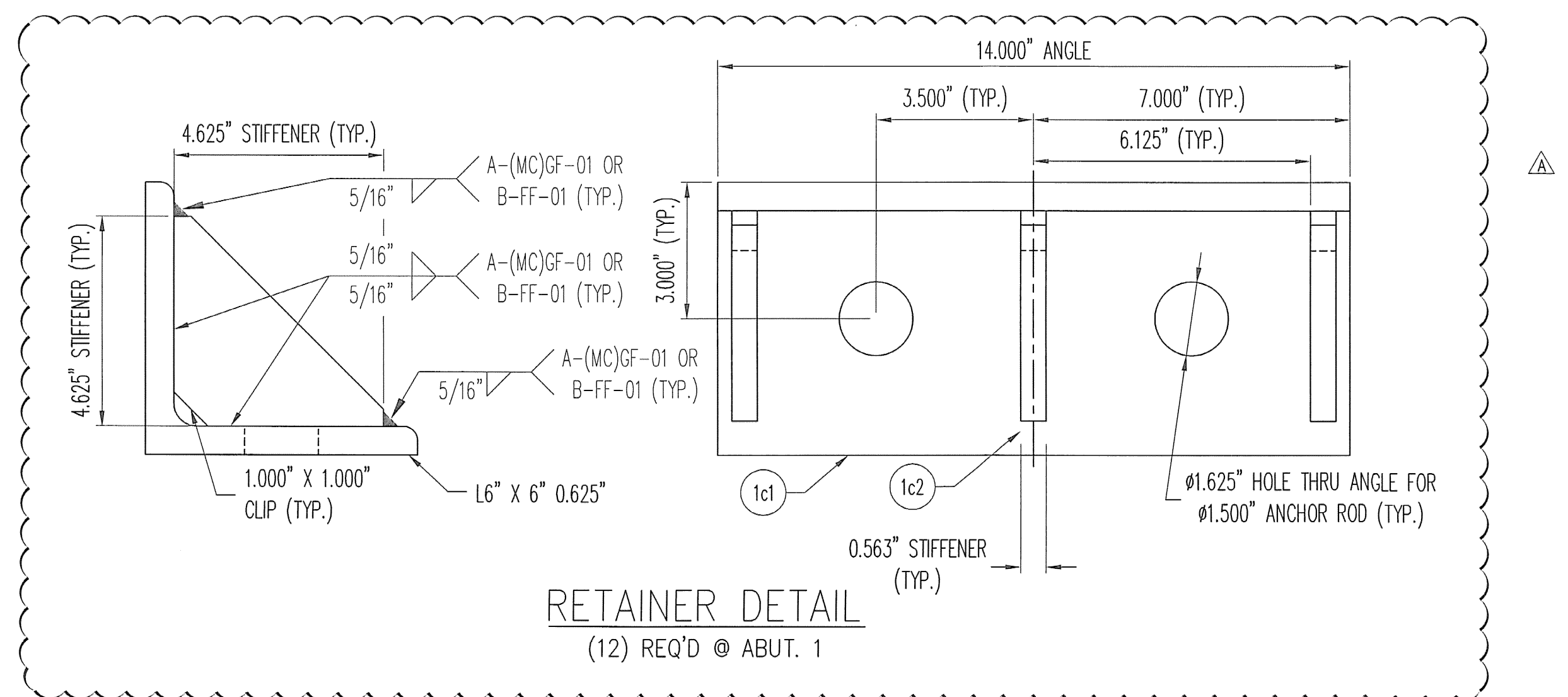


PLAN VIEW  
 EXPANSION ELASTOMERIC BEARING  
 (6) REQ'D @ ABUT. 1

SECTION 'A-A'



DETAIL 'B'



RETAINER DETAIL  
 (12) REQ'D @ ABUT. 1

MK	QTY	DESCRIPTION	MATERIAL	LENGTH	REMARKS	REV
1A	6	ELASTOMERIC BEARING				-
1a1	6	4.281" X 14.000"	NATURAL RUBBER	10.000"	60+/-5 DURO GR.4	-
1a2	42	12 GA. X 13.750"	A1011 GR. 36	9.750"	PLAIN	-
1mp1	6	1.500" X 29.000"	A709 GR 50	14.000"	METALIZE, SEAL	A
1sp1	6	1.000" X 15.500"	A709 GR 50	14.000"	METALIZE, SEAL	A
1B	6	FABRIC PAD				-
1b1	6	0.125" X 29.000"	AASHTO (LRFD) 18.10.2	14.000"	HOLES	-
1C	12	RETAINER				-
1c1	12	L6 X 6 X 5/8	A709 GR 50 OR A992	14.000"	1.625" Ø HOLES; METALIZE, SEAL	A
1c2	36	0.563" X 4.625"	A709 GR 50 OR A992	4.625"	CLIPPED; METALIZE, SEAL	A
1D	24	SWEDGE ROD				-
1d1	24	Ø1.500" X 23.000" SWEDGED ROD	A449		4" THREADS, 17" SWEDGE; A153-HDG	-
1F	24	HEAVY HEX NUT				-
1f1	24	Ø1.500" HEX NUT	A563-DH OR A194-2H		A153-HDG	-
1G	24	WASHER PLATE				-
1g1	24	0.500" X 3.000"	A709 GR 50	3.000"	1.563" Ø HOLE @ CENTER; A123-HDG	A
					1/28/09 11:18:46 AM	

RECEIVED  
 OK'D BY SSS  
 DATE 2/3/09

SEE SHT. G01 FOR GENERAL NOTES & COATING LIMITS.

REV.	DESCRIPTION	DATE	DAE	DAE
1	REVIEWERS COMMENTS	1/27/09	DA	DAE
	LOCATION — VT 102 (MAJOR COLLECTOR)		ITEM	QUANTITY
	PROJECT NO. — ER ST 0271 (16)		25217-1104-1	6 OF 6
	BRIDGE — 16			
	P.O. NO. — C2223			
	DESIGNER — VT DOT			
	CUSTOMER — WINTERSET INC.			
	DESCRIPTION: VERSIFLEX ELASTOMERIC BEARING ESSEX CO., VT	SCALE: N.T.S.	DRAWN BY: DA	CHECKED BY: DAE
		PROJECT NUMBER: 25217	PRODUCT CODE: 1104	DATE: 12/15/08
			RELEASE: 1	SHEET: 01

